

FREQUENTLY ASKED QUESTIONS

LOCATION

WHERE IS THE GRAND LOCATED?

The Grand is located at the north end of Wakefield, 25 minutes from Ottawa and less than ten minutes from Le Belvédère.

WHAT IS THE GRAND'S ADDRESS?

911 Chemin Riverside, Wakefield Quebec, J0X 3G0.

WHAT IS THE EASIEST WAY TO FIND THE GRAND?

The Grand is a few seconds from Wakefield's only set of traffic lights, across the street from the Rona Express on Chemin Riverside and nestled behind a large pond.



ACCOMMODATIONS

HOW MANY UNITS DOES THE GRAND HAVE?

The Grand has 5 units, accommodating a maximum of 20 persons.

WHAT IS THE TOTAL NUMBER OF BEDS?

There are seven queen beds, one double sofa bed and two bunk beds.

HOW MANY DOES THE GRAND SLEEP?

The Grand can accommodate a maximum of 20 persons.

DO ALL THE UNITS HAVE A PRIVATE WASHROOM?

Yes, each unit has a private washroom.

IS THE GRAND WHEELCHAIR ACCESSIBLE?

Unfortunately, access to the Grand is limited by the original stone architecture.



DID YOU KNOW?



RESERVATIONS

WHAT IS THE GROUP RATE AND WHAT'S INCLUDED?

The 2017 group rate is \$2000 plus tax and service. The group rate includes accommodation, continental breakfast and complementary shuttle service to and from Le Belvédère for up to 20 persons.

HOW DOES ONE RESERVE THE GRAND?

The Grand is temporarily reserved for any couple getting married at Le Belvédère. A follow-up email will be sent prior to your wedding.

WHAT IS YOUR CANCELLATION POLICY?

As a small establishment it is necessary to exercise a firm cancellation policy. Once a reservation has been made, and a deposit received, payment becomes non-refundable.

WHO COORDINATES THE ROOM LIST?

Usually someone in the wedding party or a family member coordinates the guest list with the aid of our room allocation form.

WHEN IS THE GUEST LIST DUE?

The final guest list is due 7 days prior to the event.

WHAT TIME IS CHECK-IN AND CHECK-OUT?

Check-in is 2pm and check-out is 11am.

CAN WE CHECK IN AFTER THE WEDDING?

All guests must register before the wedding.

CAN WE ARRIVE EARLY?

You are welcome to call us a few days ahead to see if an early arrival is possible.

ARE PETS PERMITTED?

Pets are not permitted.

CAN WE STAY AN EXTRA NIGHT?

Absolutely. If space permits, we would love to have you arrive a day early, or stay a day longer.



Our group rate includes accommodation, continental breakfast and complementary shuttle service to and from Le Belvédère for up to 20 persons.

FOOD & BEVERAGE

WHAT TIME IS BREAKFAST?

Breakfast is served between 8:00am and 10:00am.

WHAT IS SERVED FOR BREAKFAST?

The Grand serves a continental breakfast including fresh coffee and espresso, juice, fresh fruit, and baked goods.

CAN WE INVITE OUTSIDE GUESTS FOR BREAKFAST?

Outside guests are not permitted, however exceptions can be made if a special request is made and cleared by our reservation desk.

ARE THERE REFRIGERATORS IN THE ROOMS?

Rooms 1 and 3 have wine fridges. Rooms 2 and 4 have regular fridges.



SHUTTLE SERVICE & VEHICLES

HOW DOES THE SHUTTLE SERVICE TO THE WEDDING WORK?

The shuttle service will schedule departures from the Grand based on the start time of the ceremony. If the ceremony starts at 4pm the first shuttle generally leaves at 3:20 and the second shuttle at 3:40.

HOW DOES THE SHUTTLE SERVICE AT THE END OF THE WEDDING WORK?

Unless an early departure is scheduled, shuttle service generally starts at 12:30 and continues until all Grand guests are returned to the hotel.

CAN I HAVE THE SHUTTLE SERVICE PICK UP OTHER GUESTS AND TAKE THEM TO THE WEDDING?

Unfortunately space and time are limited before the ceremony so we cannot shuttle guests from other hotels to the wedding.

IS ALCOHOL PERMITTED IN THE SHUTTLE?

No, alcohol is not permitted in the shuttle.



BOOK YOUR STAY TODAY!

Visit us at 911 Riverside Dr, Wakefield, Quebec

POST-WEDDING ACTIVITIES

CAN WE INVITE OUTSIDE GUESTS TO THE AFTER HOUR GATHERING?

Only guests staying at the Grand are permitted on the property after midnight. No additional guests are allowed.

CAN WE BRING OUR OWN ALCOHOL TO THE GRAND?

Yes. The Grand is not licensed but responsible alcohol consumption is permitted.

HOW LATE CAN WE USE THE MAIN FLOOR AND OUTDOOR LOUNGE AREAS?

Until 3am.

WILL THE OUTSIDE FIRE BE BURNING?

Yes, if the weather permits.

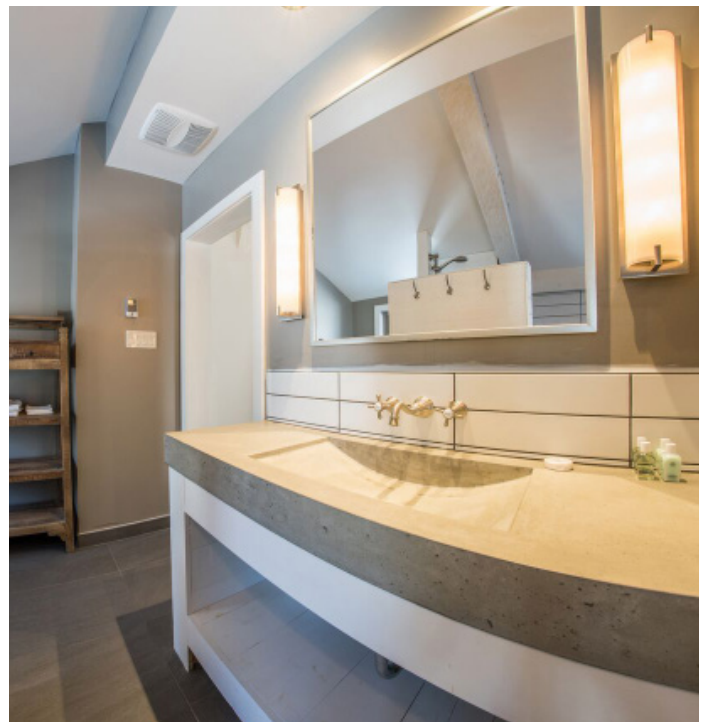


CAN WE DRIVE OURSELVES TO THE WEDDING?

Yes. You are welcome to make your own way to the wedding provided you have already registered at the Grand.

CAN WE LEAVE OUR VEHICLES AT LE BELVÉDÈRE OVERNIGHT AND TAKE THE SHUTTLE BACK?

Yes. You are welcome to leave your vehicles at Le Belvédère until 11am the following morning and return to the Grand on the shuttle after the wedding.



2017 GROUP RATE

OUR GROUP RATE IS **\$2000** AND INCLUDES:

- Accommodation
- Continental breakfast
- Complementary shuttle service

Additional nights for \$1500 can be added if space is available.

Rates are subject to tax and a 15% service charge.



CANCELLATION POLICY

As a small establishment it is necessary to exercise a firm cancellation policy. Once a reservation has been made, payment becomes non-refundable.

CONTACT US

info@wakefieldgrand.ca

© PHOTOS COURTESY OF ANDREW VAN BEEK